

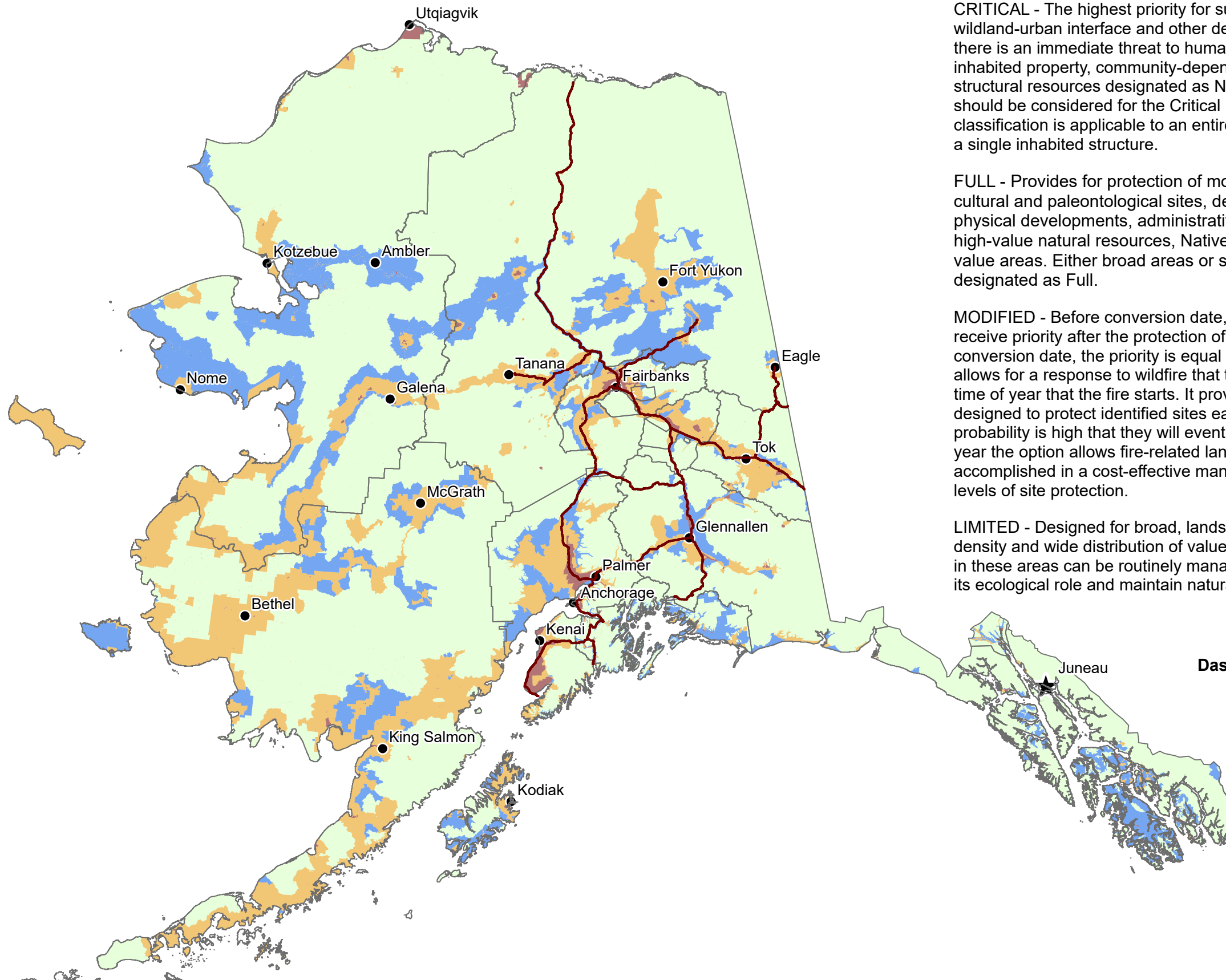
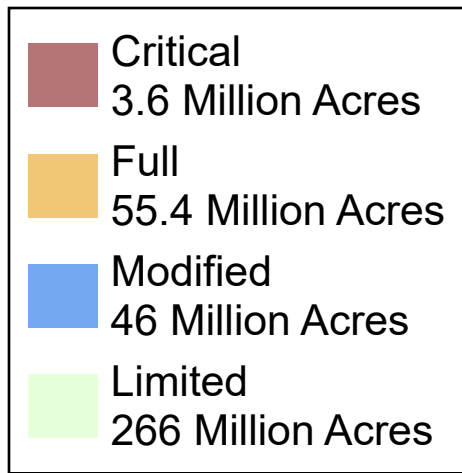


Alaska Wildland Fire Management Options, 2026

U.S. Department of the Interior
U.S. Wildland Fire Service, Alaska



5/6/2026



CRITICAL - The highest priority for suppression actions. Lands in wildland-urban interface and other densely populated areas where there is an immediate threat to human life, primary residences, inhabited property, community-dependent infrastructure, and structural resources designated as National Historic Landmarks should be considered for the Critical management option. This classification is applicable to an entire village or town as well as a single inhabited structure.

FULL - Provides for protection of moderately populated areas, cultural and paleontological sites, developed recreational facilities, physical developments, administrative sites and cabins, structures, high-value natural resources, Native Allotments, and other high-value areas. Either broad areas or specific sites qualify to be designated as Full.

MODIFIED - Before conversion date, fires occurring in Modified will receive priority after the protection of Critical and Full areas. After conversion date, the priority is equal to Limited. The Modified option allows for a response to wildfire that tailors the initial action to the time of year that the fire starts. It provides for an initial response designed to protect identified sites early in the season when the probability is high that they will eventually be affected; but later in the year the option allows fire-related land-use objectives to be accomplished in a cost-effective manner while providing appropriate levels of site protection.

LIMITED - Designed for broad, landscape-scale areas with a low density and wide distribution of values to be protected. Wildland fires in these areas can be routinely managed to enable fire to function in its ecological role and maintain natural fire regimes.

Visit the Alaska Interagency Dashboards for more information:
<https://ow.ly/u44M50YVHLH>

No warranty is made by the U.S. Wildland Fire Service as to the accuracy, reliability, or completeness of this map or the data displayed for individual use or aggregate use with other data.

